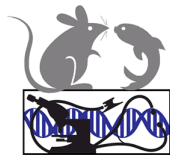


-
- [Home](#)
 - [Research](#)
 - [Education](#)
 - [Faculty](#)
 - [Phenotyping \(and Pathology\) Core](#)
 - [PHENOCORE Home](#)
 - [Phenotyping Course](#)
 - [What is Phenotyping?](#)
 - [Core Faculty & Resources](#)
 - [In Vivo Tests](#)
 - [Pathology](#)
 - [Retrovirus Laboratory](#)
 - [Comparative Pathology](#)
 - [Laboratory Animal Medicine \(Comparative Medicine\)](#)
 - [Contact Us](#)

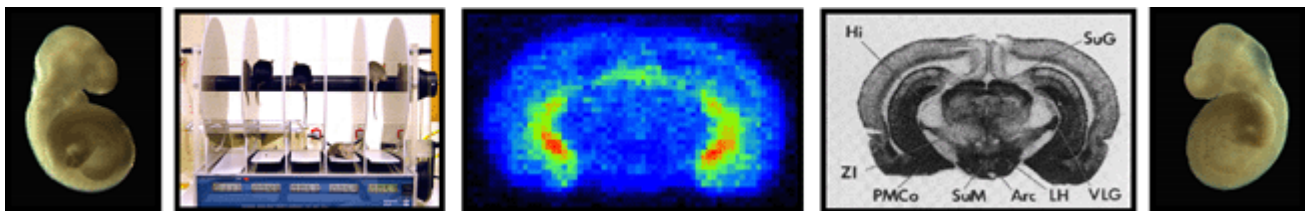
Home > [Molecular & Comparative Pathobiology](#) > [Phenotyping Core](#) > DONE > 06 Phenotyping Symposium > [07PhenoPDFs](#)

Johns Hopkins Phenotyping Symposium:



2007 Johns Hopkins Phenotyping Symposium

Tuesday March 20, 2007
PCTB Mountcastle Auditorium
725 North Wolfe Street
Baltimore MD 21205



PROGRAM

915-930 Introduction to phenotyping and the phenotyping core

[Cory Brayton, DVM, Dip ACLAM, ACVP](#); Associate Professor, Molecular and Comparative Pathobiology; Director, Phenotyping Core; JHU School of Medicine -- **[Go to Phenotyping Core](#)**

930-10 ES cell to mouse: Getting your genetic variant on the hoof

[Roger Reeves, PhD](#); Professor, Physiology, McKusick-Nathans Institute for Genetic Medicine; Faculty Director, Transgenic Core Facility JHU School of Medicine -- **[GO to JHUSOM Transgenic Core Facility](#)** .

10-1030 Why fish are better than mice

[Shannon Fisher, MD, PhD](#); Assistant Professor, McKusick-Nathans Institute for Genetic Medicine (IGM) and Molecular and Comparative Pathobiology; JHU School of Medicine

1045-1115 Clinical phenotyping: Physical exam of the mouse

Julie Watson, VetMB, Dip ACLAM; Assistant Professor, Molecular and Comparative Pathobiology; JHU School of Medicine

1115-1145 Motor phenotyping

[Ellen Hess, PhD](#), Associate Professor, Neurology, Neuroscience; JHU School of Medicine

1145-1215 Metabolic profiling: Oxymax and indirect calorimetry

[Gabriele Ronnett, MD, PhD](#); Professor, Neuroscience; JHU School of Medicine

LUNCH BREAK -- Visit Exhibits

1-2pm PHENOTYPIC ANALYSIS OF DEVELOPING MICE

Brad Bolon, DVM, PhD, Dip ACVP, ABT, GEMpath Inc. Cedar City Utah

215-245 Emotional/cognitive /social phenotyping

[Mikhail Pletnikov, MD, PhD](#); Assistant Professor, Psychiatry and Behavioral Sciences; JHU School of Medicine

245-315 Small animal imaging

[Martin Pomper, MD, PhD](#); Associate Professor, Departments of Radiology, Pharmacology and Oncology; Division of Neuroradiology; JHU School of Medicine

[Go To Small Animal Imaging Resource Program](#)

(SAIRP) **[Kathleen Gabrielson, DVM, PhD, Dip ACVP](#)**; Molecular and Comparative Pathobiology; JHU School of Medicine -- **[Go To Small Animal Imaging Resource Program \(SAIRP\)](#)**

315-345 Phenotyping by ultrasound with histopathology

4-430 Pulmonary phenotyping

[Wayne Mitzner, PhD](#); Professor and Director, Division of Physiology; JH Bloomberg School of Public Health

430-5 Clinical and anatomic pathology phenotyping

Cory Brayton, DVM, Dip ACLAM, ACVP; Associate Professor, Molecular and Comparative Pathobiology; Director, Phenotyping Core; JHU School of Medicine -- **[Go to Phenotyping Core](#)**

Registration is CLOSED.

Sincere thanks to our faculty and staff for their efforts and time, and to Exhibitors for assisting us in presenting this free symposium to the scientific community.

[Go to the CURRENT COURSE SITE](#)

[Visit Johns Hopkins' Phenotyping Core Web Site](#)