

- 
- [Home](#)
  - [Research](#)
  - [Education](#)
  - [Faculty](#)
  - [Phenotyping \(and Pathology\) Core](#)
    - [PHENOCORE Home](#)
    - [Phenotyping Course](#)
    - [What is Phenotyping?](#)
    - [Core Faculty & Resources](#)
    - [In Vivo Tests](#)
    - [Pathology](#)
  - [Retrovirus Laboratory](#)
  - [Comparative Pathology](#)
  - [Laboratory Animal Medicine \(Comparative Medicine\)](#)
  - [Contact Us](#)

Home > [Molecular & Comparative Pathobiology](#) > [Phenotyping Core](#) > DONE

## 2013 Mouse Pathobiology and Phenotyping Short Course

July 15-19, 2013

Short Course & Workshop on *Mouse Biology, Pathology, Genetics for Phenotyping and Translational Research*

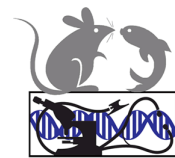
[\[concurrent with graduate school course ME 680.712\]](#)

At Johns Hopkins University School of Medicine,  
Baltimore, MD USA

**TARGET AUDIENCE:** Scientists, faculty, postdocs, graduate students, veterinarians, pathologists who use or expect to use mice in translational research.

**AIMS:** To provide information, practical tools and skills essential to the optimal use of mice in translational research.

**FORMAT & TOPICS:** 5 day short-course on mouse biology, pathology, genetics, practical and multidisciplinary phenotyping for translational research, including lectures, 3 hands on laboratory session, exhibits, tours, poster session,



Visit Exhibits  
9am Monday to  
5pm Tuesday.

Contact  
[Welza1@jhmi.edu](mailto:Welza1@jhmi.edu)  
for 2013 Exhibit  
Information

---

**2013  
EXHIBITORS**

pathology slide conference.

**DVM/VMD RACE approved 36.5 credit hrs.**

**SYLLABUS:** [MOUSE PATHOBIOLOGY & PHENOTYPING MANUAL](#)  
is the core syllabus material, several sections can be **downloaded (free)**

Additional syllabus/lecture material is uploaded before the course, and provided at the course.

---

### **JHU REGISTRATION**

**(Grad Students, Postdocs, Faculty and Staff)**

After June 1, call or email for availability of laboratory sessions.

For graduate students and postdocs, this is graduate school course ME:680.712

---

### **NON-JHU REGISTRATION**

**Early registration (before June 15):**

\$800 for Lectures + Hands on Laboratory Sessions, \$600 for Lectures Only.

**After Jun 15:** \$1,000 for Lectures and Lab Sessions (call or email for availability),

\$800 for Lectures Only.

---

## **2013 Program**

---

[TACONIC](#)

[FLAGSHIP](#)

[Biosciences](#)

---

## **JHU CORES**

[PHENOTYPING CORE](#)

[BRB BEHAVIOR CORE](#)

[CMOR CENTER FOR  
METABOLISM AND  
OBESITY RESEARCH](#)

[SAIRP Small Animal Imaging  
Resource Program](#)

[Comprehensive Oncology  
Tissue Services Core](#)

[Transgenic & ES Cell Core](#)

---

**MONDAY**      **INTRODUCTION to Mouse Pathobiology & Phenotyping**  
**July 15, 2013**    **+ EXHIBITS + POSTERS**

Web Resources; Summary Tables, references (23 p PDF)

- 9-10am      Brayton - Introduction to phenotyping, mouse genetics, nomenclature & Famous Mice (16p PDF)
- 10-11      Brayton - Common Spontaneous Phenotypes and Diseases (NON infectious) (10p PDF)
- 11-12      Watson - Environmental influences on phenotypes 1  
What is in your mouse environment? (lectures 1,2 - 18p PDF)
- 12-1      **LUNCH - VISIT EXHIBITS + POSTERS**  
**+ Medical Illustration Art Exhibit**
- 1-2      Watson - Environmental influences on phenotypes 2  
What ELSE can impact your research and phenotypes: Your Surveillance Program ...
- 2-3      Brayton - Infections & infectious phenotypes that can impact your research (19p PDF)
- 3-4      Brayton - Immunodeficient Mice - options & challenges (11p PDF)
- 4-5      Karim - Pathology and Phenotyping GEM intestinal Cancers (7p PDF)

**5-7pm**      **RECEPTION, EXHIBITS &  
POSTER SESSION** (Poster Abstracts - PDF)

**TUESDAY**      **GEM & Multidisciplinary Phenotyping  
+ EXHIBITS**

9-10      Hawkins/Reeves – Making Mice - traditional and new transgenic technologies (6p PDF)

10-11      Doyle / Shaw - Ophthalmic Phenotyping (6p PDF)

11-12      Mitzner – Pulmonary/Respiratory Phenotypes & Phenotyping (12p PDF)

**12-1**      **LUNCH & Tours - CMOR (metabolic) & BRB Imaging, Behavioral + EXHIBITS +  
POSTERS**

1-2      Potter/Pletnikov – Emotional / Cognitive Phenotyping (6p PDF)

2-3      Aja - Metabolic Phenotypes & Phenotyping (6p PDF)

3-4      Lauer/May - Auditory/acoustic Phenotyping (5p PDF)

4-530      Foss - IMAGING for Phenotyping (10p PDF)

Gabrielson - Cardiovascular phenotyping: In vivo functional correlations to pathology (6p PDF)

**WEDNESDAY**      **Practical Phenotyping 1 DOWNLOAD LAB MANUAL - 52p PDF**

9-10      Watson - Clinical / Physical Exam - Modified SHIRPA (*refer to Lab Manual - above*)

10-11      Brayton - Clinical Pathology - oversimplified (13p PDF)

11-12      Brayton & al - Online & other Resources (*refer to web resources - above*)

**12-1**      **LUNCH (on your own) & Tours - CMOR (metabolic) & BRB Imaging, Behavioral**

130-3pm      Watson / Forbes & al

LAB 1: Clinical Examination (*refer to Lab Manual - above*)

315-5pm      Forbes / Brayton & al

LAB 2: Clinical Pathology and Specimen collection (*refer to Lab Manual - above*)

**THURSDAY**      **Practical Phenotyping 2**

9-10      Brayton - Anatomic Pathology Phenotyping - Necropsy (*refer to Lab Manual - above*)

10-11      Brayton - Anatomic Pathology Phenotyping - Trimming (*refer to Lab Manual - above*)

11-12      Brayton - Microscopic Anatomy & Pathology by Virtual Microscopy (*refer to Lab Manual -  
above*)

**12-1**      **LUNCH (on your own)**

1-4      Forbes / Brayton et al.

LAB 3: Anatomic Pathology - Necropsy (*refer to Lab Manual*)

**4-6pm**      **Digital Slide Conference - with refreshments**

**FRIDAY**      **Practical Phenotyping 3  
Advanced Pathology for Phenotyping & Translational Research**

9-11      Forbes / Brayton et al.

LAB 4: Anatomic Pathology - Trimming (*refer to Lab Manual - above*)

- 11-12 A Meeker - Basic Immunohistochemistry - principles and protocol development (9p PDF)
- 12-1 LUNCH**
- 1-2 J Ward - Evaluation of Embryonic & Perinatal Lethality In Mice
- 2-3 D Haines & M Anver - Pathology Core Support for Basic and Translational Research: GEM, Xeno, TMAs and Nano
- 3-4 T Cornish – An introduction to digital whole slide imaging and whole slide image analysis
- 5pm Quizzes Due ! for course ME680.712**  
**TURN in to BRB 851**

## Previous Courses & Symposia

[2012 JHU Short Course](#)  
[2011 JHU Short Course](#)  
[2010 JHU Short Course](#)  
[2009 JHU Symposium](#)  
[2008 JHU Symposium](#)  
[2007 JHU Symposium](#)  
[2006 JHU Symposium](#)  
[2008 ME 680.712 course schedule](#)  
[2007 ME 680.712course schedule](#)

For additional Course information, to order a complete manual or syllabus, or to provide feedback or suggestions - contact [Dr. Brayton](#).

[\*Back to Top of Page & Course Schedule\*](#)

[\*Back to Phenotyping Core Home for information about Phenotyping and Pathology for Research at JH\*](#)